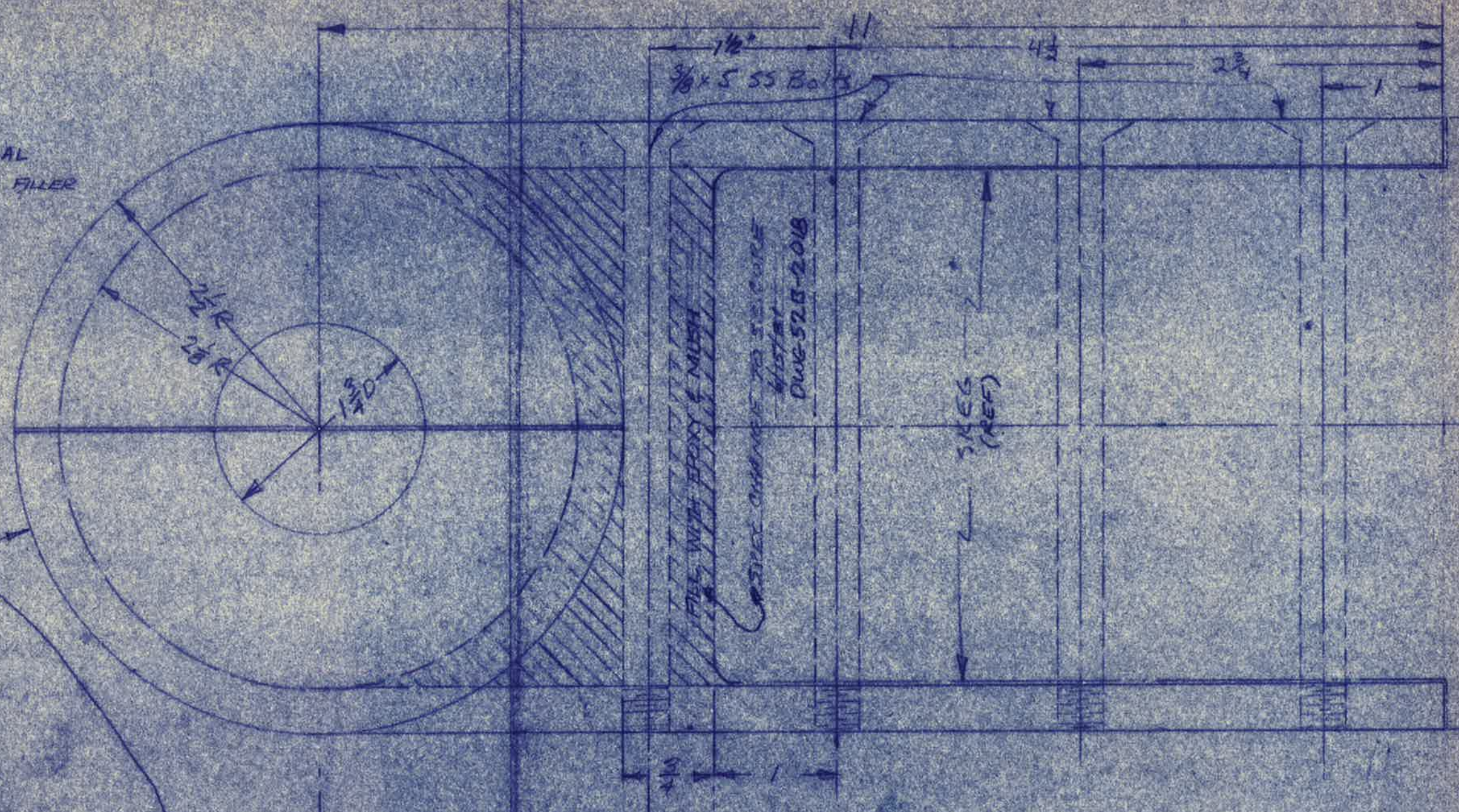


REVISION

A- 1-10-80 SHORTEN LENGTH 1/2"
RELOCATE 2 FORWARD HOLES
ACCORDINGLY ~~1/2"~~ 'SPEC CHG'

B- 2-18-80 UPDATED BEARING MATERIAL
C- 5-8-81 ADDED 3/8" BOLT THEN EPOXY FILLER

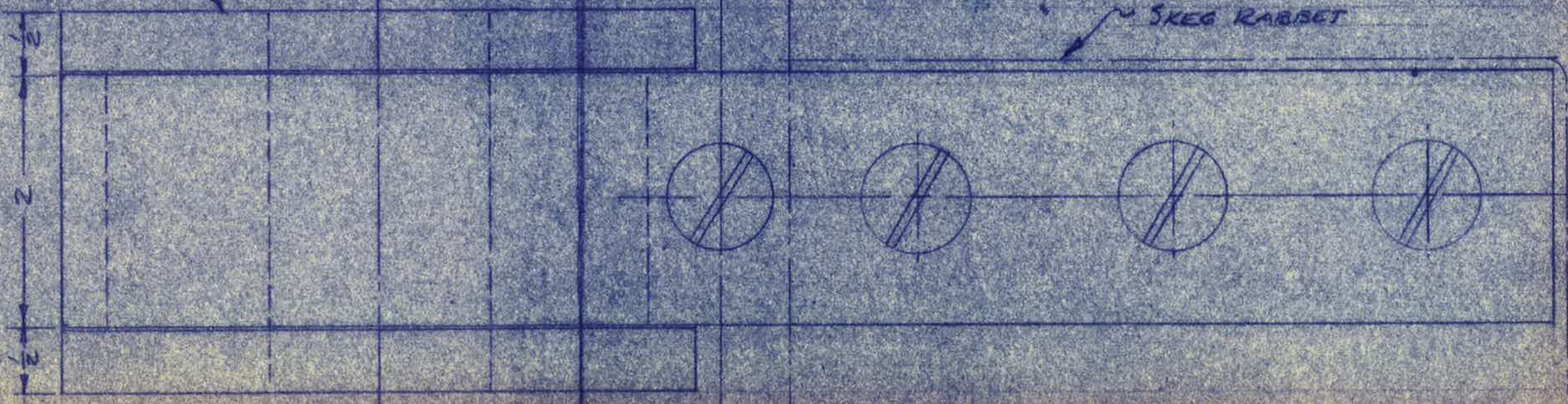


FIBERGLASS REINFORCED
POLYESTER WITH BRONZE
BUSHING

I-52, 46, 42, 41

Part # 551503

3/8 x 2 55 BAR
BENT TO FIT BUSHING
(TOTAL LENGTH REQD = 26")



IRWIN-52
RUDDER GUDGEON
FULL SCALE
WHS 7-11-75

BOTTOM OF SKEG (REF)

52-100-2